

Stay-Linked™
Application Mobility. Host Reliability.

Wireless Device Management

Powered by
Athena™ from
ODYSSEY
software, inc.

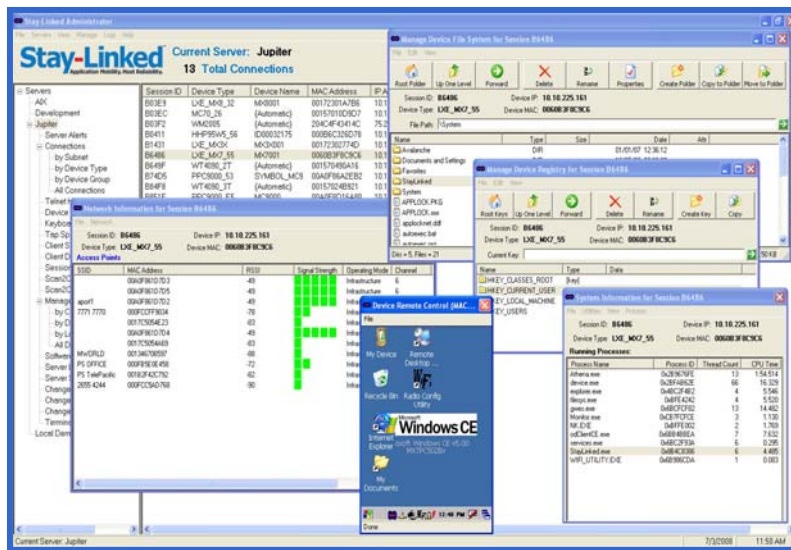
- Same thin-client connection
- Same Administrator console

Try it
FREE for
30 Days!



The shift to **thin** is on.

Manage devices with the same Stay-Linked thin-client solution.



Stay-Linked Administrator GUI Console with Device Management features

For any Stay-Linked thin-client connected wireless device:

- ✓ Manage the file system and folder structure
- ✓ Install/Remove applications
- ✓ Start/Stop applications and processes
- ✓ Verify RF signal strength on the device and network components
- ✓ Check processor, memory and battery utilization
- ✓ Device "Remote Control"
- ✓ Software Provisioning

Plus many more valuable features...

No additional consoles needed: The same Stay-Linked Administrator GUI Console used for Terminal Session Management and Centralized Terminal Emulation Configuration can now be used to perform wireless Device Management functions as well.

No additional ports or Web Services needed: All communication with the wireless device for Device Management purposes is still performed using the proven and trusted Stay-Linked highly-reliable, secure and high-performance Client2Host™ protocol.

For more details, contact us, or your
Stay-Linked Certified Partner reseller.

Stay-Linked Corporation

15991 Red Hill Avenue
Suite 210
Tustin, CA 92780 USA

P 714.918.7700
F 714.918.7727

www.Stay-Linked.com